

# Electronic Roll Feeder

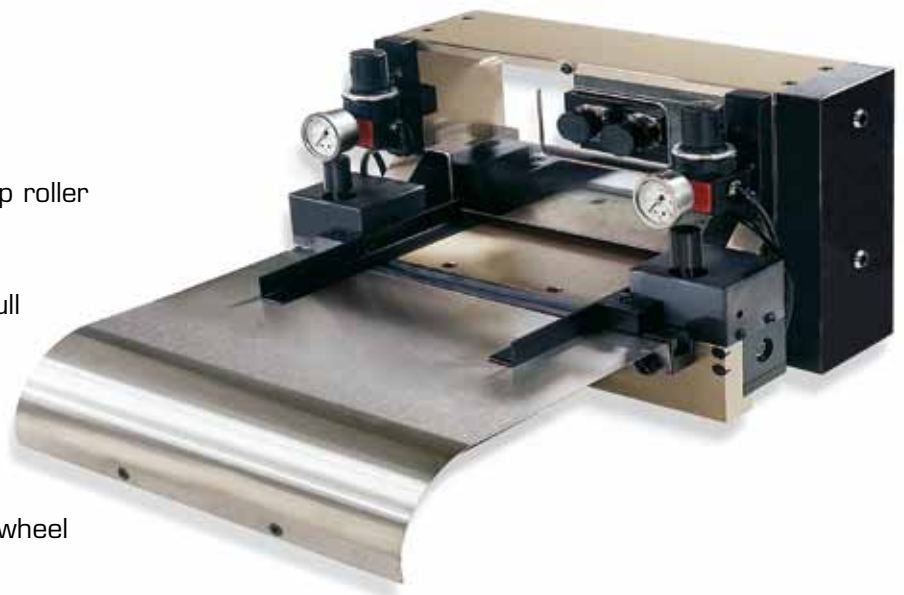
## EVG 220-520 AK

**200 mm<sup>2</sup> strip cross-section (the all-rounder)**

- Compact design
- Can be retrofitted to any press
- Service friendly
- Highly dynamic AC servomotor
- Roller driven by toothed belts
- Precision rubber rollers
- Rapid pneumatic pilot release
- Adjustable press-on force by the top roller
- Adjustable release path
- Feed-in plate with strip guidance
- Machine can be used to push or pull

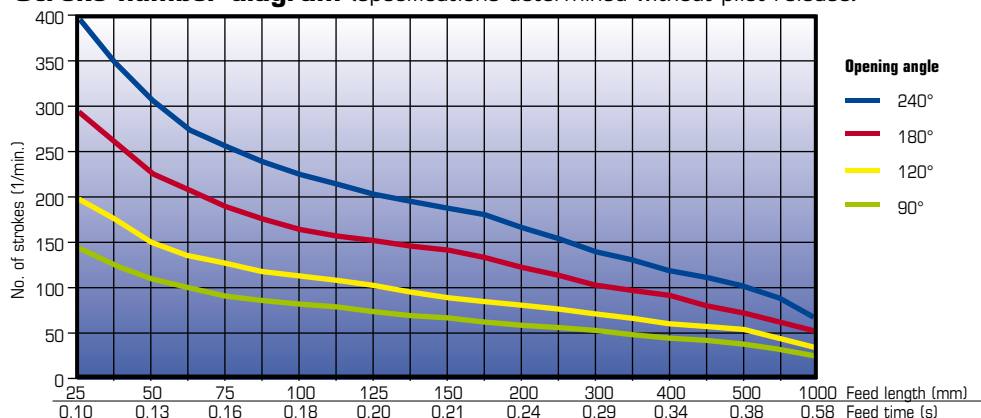
### Options

- Rollers with special coating
- Manually adjustable mounting bracket
- Pneumatically actuated measuring wheel
- Dual system (push and pull)
- Colour marking sensor
- Sensor for strip guidance monitoring



Model	Strip width	Roller opening	Rollers	Feed length	Precision	Speed	Tractive force
EVG 220 AK	220 mm	max. 6 mm	ø 60 mm	0,1 – 19'999 mm	+/- 0,1 mm	max. 160 m/min	110 N
EVG 320 AK	320 mm						
EVG 420 AK	420 mm						
EVG 520 AK	520 mm						

**Stroke number diagram** (specifications determined without pilot release)



Technical modifications subject to change. Performance data depends on material.

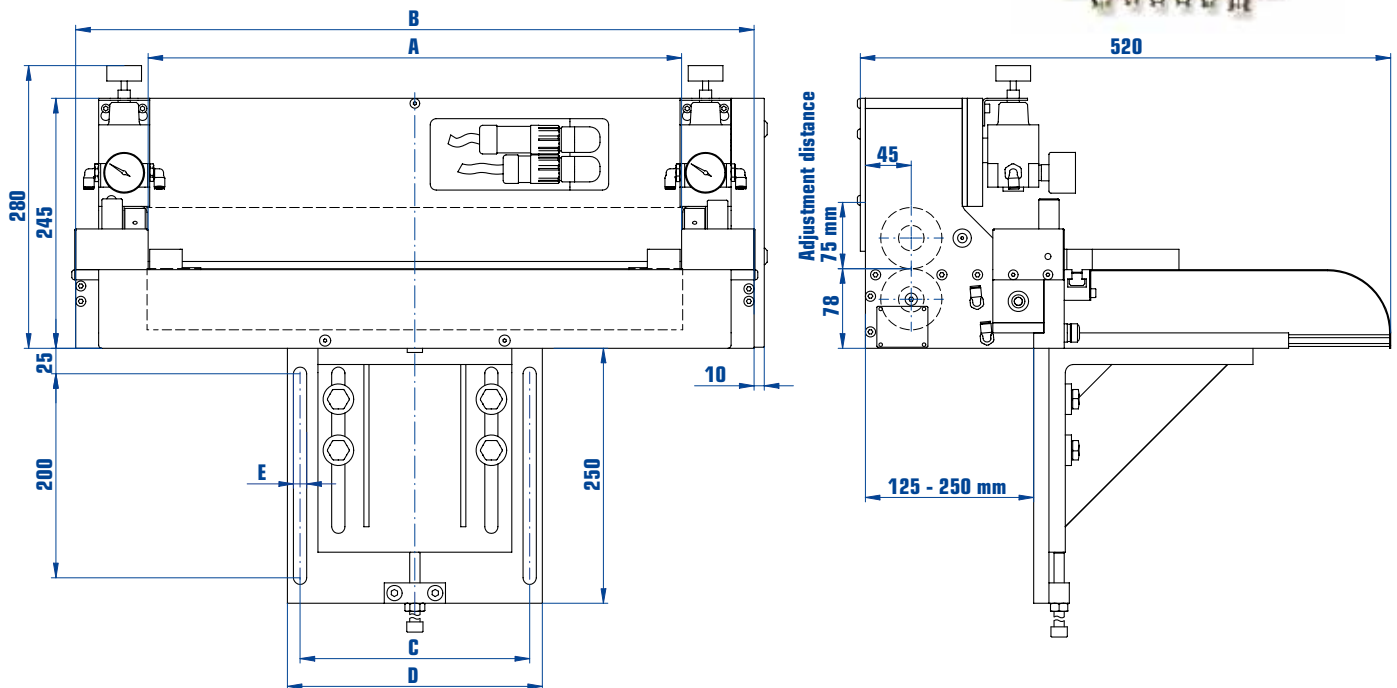
# Compact CNC control system for roll feeders

- Easy coupling and retrofitting on any press
- Same operation for all types of feed
- Extremely easy to program and operate
- Operator panel with LCD display and hotkeys
- Profile speed adjustment based on selected number of strokes
- Up to 99 user programs can be stored in the control system
- Piece, partial quantity and auxiliary counters can be freely programmed
- Multiple sections can be programmed
- End of strip monitoring



## Options

- Electronic cam shaft with 16 cams (8 dynamic)
- Data linking to superordinate computer via RS-232, Profibus or Ethernet
- PC software for external data maintenance and backup
- Tool protection
- Optoelectronic sensors for finding marks with software



Model	A	B	C	D	E
EVG 220 AK	220	365	175	200	11
EVG 320 AK	320	465	175	200	11
EVG 420 AK	420	565	225	250	13
EVG 520 AK	520	665	225	250	13

Technical modifications subject to change. Performance data depends on material.